



WE CARE FOR OUR CUSTOMER NEEDS.





A PREFACE OF ROYAL VANQUISH GROUP

Key Focus and our Control

Our offering : In Construction and Supply of Spares

Our Strength : Is Our Team

Our Profile : We are in association with different industries

Our Growth : Resources - Revenue- Area of business



A PREFACE OF ROYAL VANQUISH GROUP

Our association :- A brief list of Customers

Few important project : executed & under execution

Our Installations :- Photographs

We care for Safety: Our Recognition

List of completed Projects and few are under execution



A PREFACE OF ROYAL VANQUISH GROUP

Operation & Maintenance Services

**List of our Tools, Tackles & Machineries --- It is a process
to satisfy the need of the Project**

Our Challenges and we look forward

We care for you requirment & your Satisfation...

We are there to serve you better to meet out common GOAL...

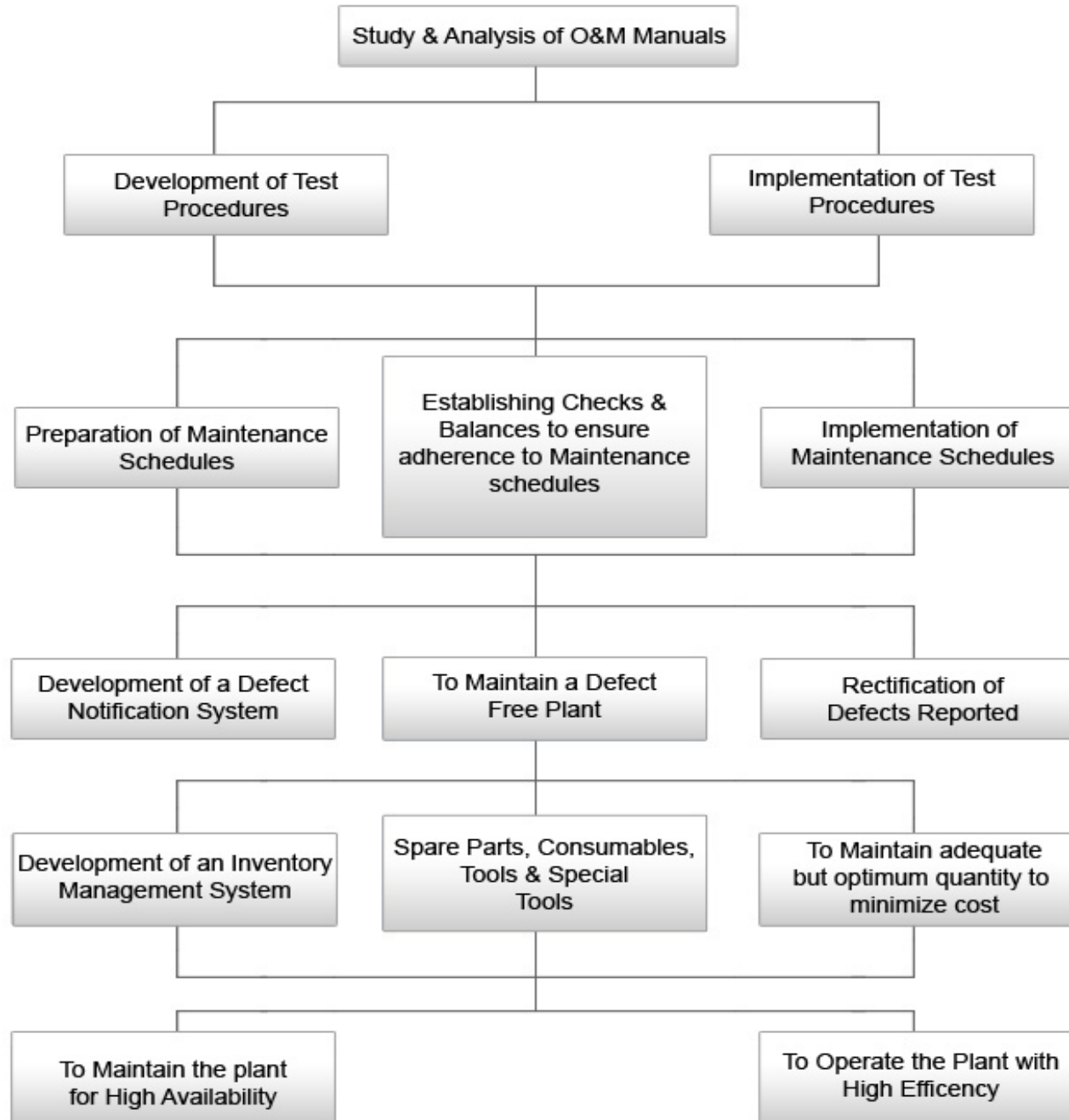


OPERATION & MAINTENANCE



OPERATION & MAINTENANCE SERVICES

ROYAL VANQUISH GROUP is today among India's one of the **Operation & Maintenance Service provider** for power stations. **ROYAL VANQUISH GROUP** is successfully handling **O&M contracts** for some of the major clients in India as well looking for an opportunity in abroad as well.





Plant Highlights

Four (4) - 375 TPH, 132 bar at 540° C, oil fired Boilers with programmable oil burner management system

4x120 MW, 3 - Cylinder Turbine with Hydrogen cooled Generator

3 auxiliary oil fired Boilers each having a rating of 55 TPH

Black start power station with a 10 MW gas turbine unit

A 220 KV sub station with SF6 Switch gear and a 30 KV sub station for local area distribution system

Hydrogen generation plant & Hypo - chlorite plant for sterile of cooling tower

Fire fighting & compressed air plant

Scope of Work

Study of plant specifications and review of contractor's commissioning test schedules and working out a detailed and comprehensive commissioning test schedule for the entire plant

The development of routine test procedures of plant and equipment's

To develop maintenance schedules

To maintain the plant for high availability, and operate the plant with high efficiency

To train the client's O & M personnel so that they take over O & M of the plant on completion of the contract period.



Achievements

ROYAL VANQUISH GROUP developed a defect notification system, which enabled the contractor to remove all defects, and thereby made the plant defect free.

With deep involvement, rigorous testing & performance guarantee tests enabled taking over a healthy plant from the contractor.

Excellent relationship with contractors and consultants enabled **ROYAL VANQUISH GROUP** to absorb the contractor's expertise which in-turn was passed over to the client along with **ROYAL VANQUISH GROUP** own high-level expertise.

ROYAL VANQUISH GROUP has handled total **Operation & Maintenance** of many plants in India, some of them are:

2 x 350 MW Thermal Power Station at Sahajbahal, Jharsuguda, Odisha of Ind Barath Energy Utkal Ltd.

2 x 67.5 MW Captive Thermal Power Station at Anantapur, Cuttack, Odisha of Bhubaneswar Power Plant Ltd.

360,000 tonnes smelter supported by a 6 x 150 MW at Lapanga, Sambalpur, Odisha of Aditya Aluminum Plant Ltd.

2 x 43 MW coal fired power plant for Action Ispat & Power Pvt. Ltd. at Jharsuguda, Orissa.

Complete Operation & Maintenance of Ash Handling Plants & Coal Handling Plant.

Many of the Thermal Power Plant Owners have been finding it difficult to effectively handle the operation & maintenance of Ash handling plants, with the result that the full load operation is affected thereby reducing the station PLF.



WHO WE ARE...

A POWER PLANT ENGINEERING AND O & M SERVICE PROVIDER

ROYAL VANQUISH GROUP, an ISO 9001:2008 certified company with its Corporate office in Bhubaneswar & Branch office in Sambalpur, Odisha, India, is experienced in setting up coal/lignite fired power plants as well as gas based simple & combined cycle power plants. It has been rendering such specialized engineering and also contracting services covering all disciplines of engineering, viz. civil, structural, mechanical, electrical, electronics, instrumentation & controls for various power utilities, industrial projects in India since inception in 2009. Today, the core competency of the company applies not only to power plants but also to multi-disciplinary infrastructural projects of any nature. ROYAL VANQUISH GROUP is also a service provider for operation & maintenance of power plants in India for the past couple of years. It has provided such services for many power plants in the past and power plants are being operated & maintained by our team of trained & experienced personnel to the entire satisfaction of our clients.



Broadly, the services we provide for coal / lignite fired power plants as well as gas based combined cycle power plants include:

- **Maintaining the scope of work through planning, execution, managing resources etc. to enhance PLF of the organization.**
- **Analyzing the outages/breakdowns/force shutdowns to modify accordingly with the optimization requirements as per available resources.**
- **Deciding fuel combinations with client to achieve top and bottom line profitability in order to enhance station heat rate.**
- **Optimizing use of available resources for improving & enhancing plant protectivity by maintaining data and planning departmental structure through arranging efficient manpower resources.**
- **Helping clients through arranging services for tackling critical equipment and liasioning aspects related with govt. offices.**
- **Inspection & expediting, quality assurance**
- **Supervision of construction, erection, testing & commissioning**
- **Operation & maintenance services**
- **Renovation & modernization of existing power plants**



Today, ROYAL VANQUISH GROUP is one of the brand names in the Indian Engineering Industry, which reflects the confidence, and satisfaction that its valued clients have reposed in the services that ROYAL VANQUISH GROUP provided over the years for a large number of projects all over the country.

HUMAN RESOURCES

The total manpower available with the Group is around 950 comprising specialists, engineers, and other supporting staff. The engineering team as a whole carries vast man-hours of experience in every aspect of thermal power plant

We have a team of highly qualified and experienced engineers representing all engineering disciplines, i.e. civil, structural, mechanical, electrical, control & instrumentation, and chemical to carry out engineering, procurement, project management, construction / erection & commissioning as well as operation & maintenance of power plants. With high experience, we have built a vast reservoir of skills to engineer but also to construct, operate and maintain power plants to international standards.



MISSION, VISION & STRENGTHS

MISSION

- **To provide development services to Industries**
- **To provide self-reliance in engineering in the country**
- **To be a vital link in the development and growth of power engineering in the country**
- **To create excellence in engineering through professionalism, high quality, innovative ideas and R&D.**
- **To provide total services to clients**
- **To nurture the profession of engineering and provide fraternity among professionals**
- **To grow in profession, scale new heights**
- **To provide world class services in the global market**
- **To develop and empower engineers both in-house and outside**
- **To understand and focus on customer needs so that we can provide with quality, efficient and economical designs**



VISION

- **To be the key catalyst in private power development in the country**
- **To be the agency to provide total solutions for energy and environment**
- **To be an active participant in developing technologies in the power field for the next century**

STRENGTHS

- **One of the leading Operation & Maintenance Service provider for power stations.**
- **Strong team skills in all engineering disciplines.**
- **Extensive domestic experience.**
- **Works with CFBC, AFBC and Pulverized fuel boilers and non-reheat and reheat turbine.**



KEY FOCUS

&

CONTROL





CONSTRUCTION & SUPPLY OF SPARES FOR ESP & BAG FILTERS

KEY FOCUS

- Construction of Boiler Structures, Pressure Parts, ESP, Bag House, Fans Ducting & Material Handling Plants
- Overhauling and maintenance of ESP & Bag house
- Application of Thermal Insulation & Refractory work

- EXPERTISE IN EXECUTING SHUT DOWN ACTIVITIES WELL WITHIN THE SCHEDULE

- SUPPLY OF SPARES FOR ESP & BAG FILTERS

- Co-ordination between customer & End user on projects schedule & EHS.

- Site scheduling & planning

- Site mobilization & Infrastructure, Storage, compliance with local laws.
- Support in Pre-Commissioning, Commissioning, Trouble Shooting, PG Test, etc

Our work processes shall lead to diligently plan and execute work, continually monitor all aspects of progress, and promptly problems to allow timely corrective actions



CONSTRUCTION – MANAGEMENT CYCLE

KEY FOCUS...

MANAGEMENT CONTROL

- **Weekly Critical Project Review with Projects**
- **Weekly Manpower Movement Review**
- **Weekly Progress Monitoring Review**
- **Resource Planning with Project Load**



OUR OFFERING



WE SUPPLY-QUALITY SPARES TO YOUR REQUIREMENT

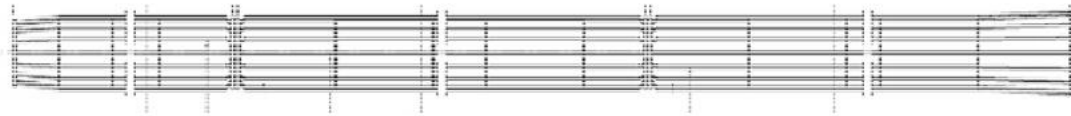
- **ESP:-**

- **EMITTING FRAMEWORK, EMITTING & COLLECTING SUSPENSION, EMITTING ELECTRODES, EMITTING RAPPING, DRIVE FOR EMITTING & COLLECTING RAPPING, COLLECTING ELECTRODES, H.T BOLTS, NUTS, WASHERS & TORQUE WRENCH, HEATING EEMENT, DUST LEVEL INDICATOR, ILLUMINATION SYSTEM, CABLES, CABLES TRAYS, CONDUITS ETC.**

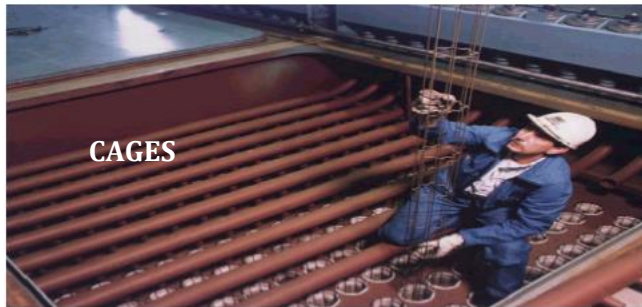
- **FILTERS**

BAG CAGES, BAGS, SOLENOID VALVES.

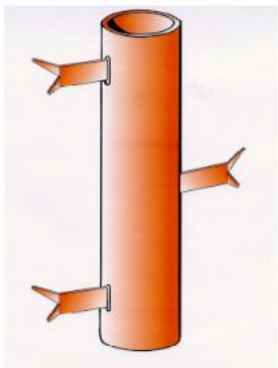
SNAPS A FEW OUR SUPPLY.....



Cages



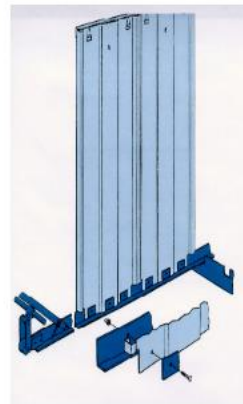
Multipeak rigid mast type emitting electrodes



Spiral type emitting electrodes



Collecting electrode



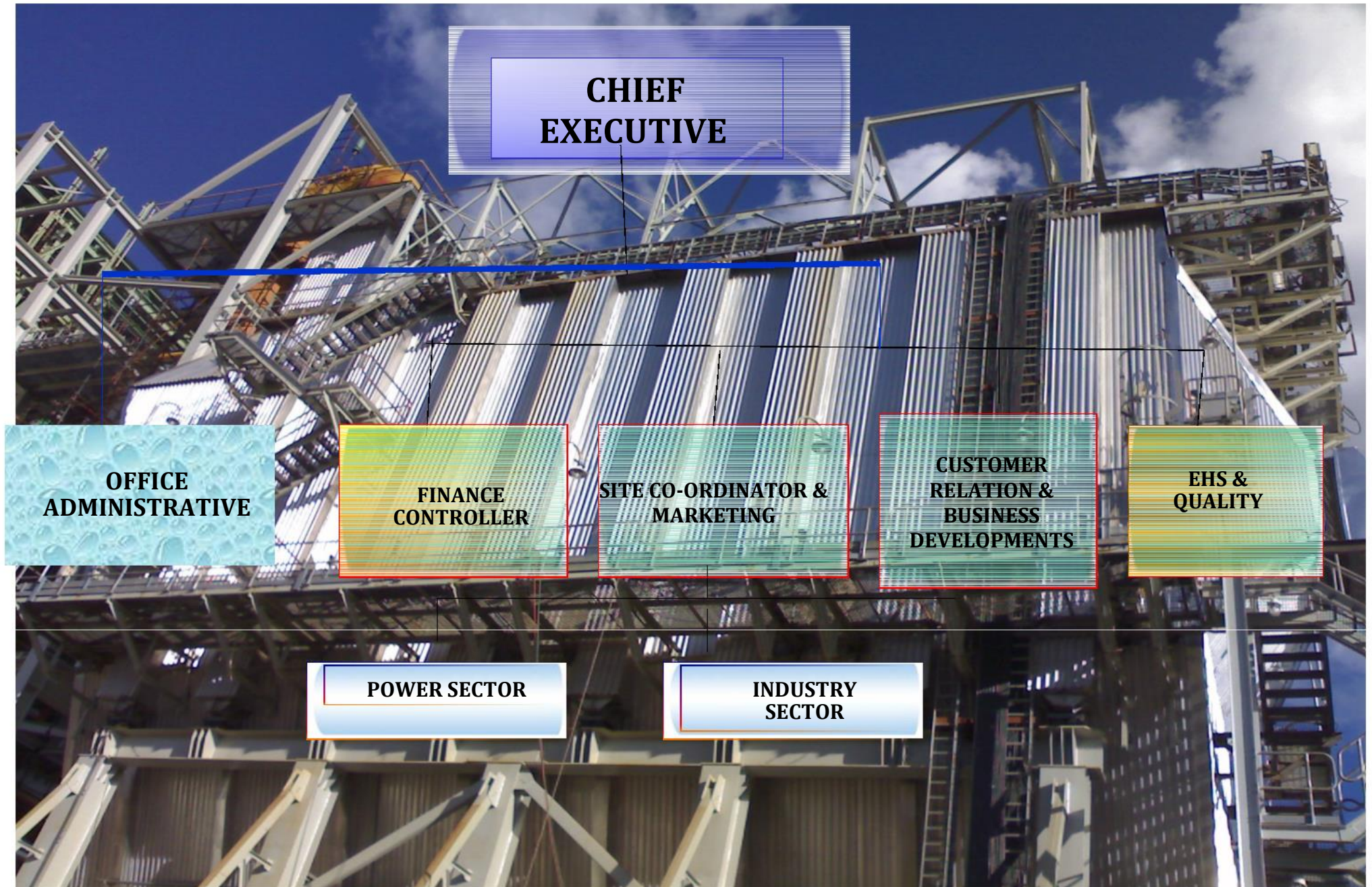
Tumbling hammer rapping system



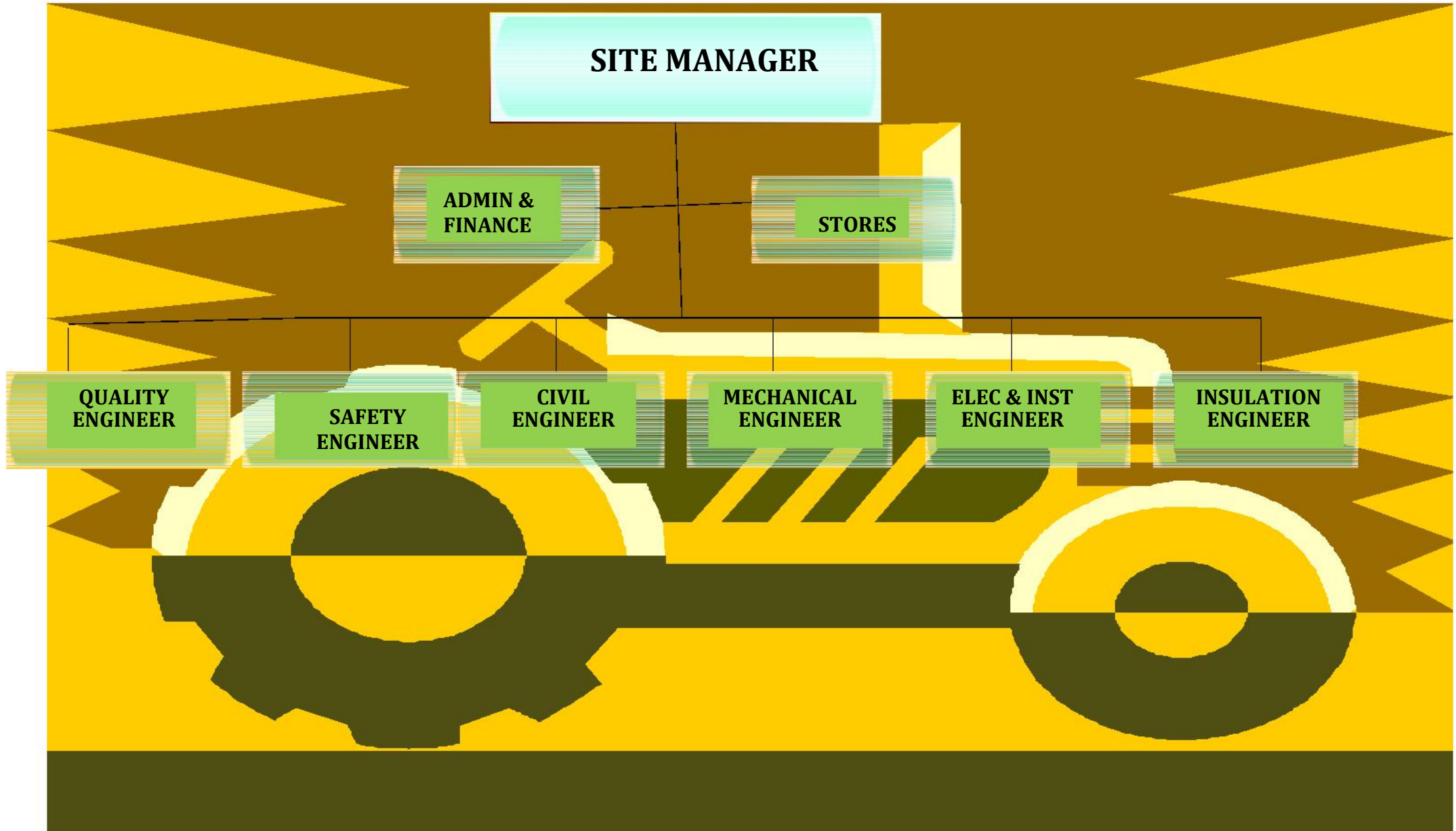


OUR TEAM

RVG ORGANISATION - OFFICE



RVG ORGANISATION - SITE





OUR PROFILE



COMPANY PROFILE

RVG has been successfully working since year 2006 in various industries like Power, Aluminum Smelter, Copper, Steel, Fertilizer, Cement, and Paper Plants including in the field of Boiler, Air Pollution Control systems etc. The sphere of RVG activities encompasses on:

- **Mechanical Installation of FTP/GTC of Aluminum Smelter**
- **Mechanical Installations of Power Boiler Structure, Pressure & Non-Pressure Parts, Insulation & Refractory works.**
- **Mechanical & Electrical Installation of Power and Industrials Boiler ESP with supply & application of Insulation and cladding.**
- **Installation of Industrial Fans and other Rotary Equipments for Power, Steel, Cement, Paper and Aluminum Plant.**
- **Operation & Maintenance of Air Pollution Control equipment including Fly Ash disposal system also carrying out Overhauling of Air Pollution Control equipment.**

And also we doSite fabrication.



COMPANY PROFILE

The Company has successfully executed installation work of the following most prestigious projects of ABB Ltd., Alstom India Ltd. Tata Projects Ltd, Edac Engg.Limited. DVC,JSPL, Larsen & Tubro. Bhusan Steel & Power Ltd. SEPCO , Simplex, Cethar Vessels Limited and various Cemet Plants and other valued customers too

POWER

WORLD BANK AIDED PROJECT OF ESP FOR 500 MW POWER PLANT AT M.S.E.B. & OF ESP FOR 500 MW POWER PLANT AT NTPC KANIAH, TALCHER, ORISSA

BOILER STRUCTURES, ESP & COOLING WATER PIPE LINE OF 1 x 300 MW SAGARDIGHI THERMAL POWER PROJECT OF WBPDC.

BOILER STRUCTURE, BOILER DRUM, PRESSURE PARTS & NON PRESSURE PARTS, ESP Etc. OF 1 x 135 MW CPP PROJECT FOR UNIT NO. IV OF 'SEPCO' PROJECT OF VEDANTA GROUP.

STEEL

ESPs - SINTER PLANT FOR JINDAL STEEL & POWER LTD, RAIGARH.

ESPs - SINTER PLANT & BAG HOUSE FOR CAST HOUSE FOR BHUSHAN POWER & STEEL LTD. JHARSUGUDA, ORISSA!

ALUMINIUM SMELTER

FUME TREATMENT PLANT AT ALUMINIUM SMELTER AT **HINDALCO INDUSTRIES LTD**, RENUKOOT, U.P. POT LINES - I, III, VII, VIII, IX, X, XI. And also FUME EXHAUST SYSTEM FOR ANODE BAKE

GAS CONDITIONING CENTRE SIX PLANT AT **VEDANTA** JHARSUGUDA

FTP AT **NALCO** PHASE - I OF POT LINES V & VI

FUME EXHAUST SYSTEM FOR ANODE BAKE AT NALCO EXPANSION PROJECT.

FTP PROJECT – POT- I, II & IV FOR BALCO SMELTER EXPANSION PROJECT.

FTP PROJECT FOR **BALCO VSS** POT – I & II SMELTER PROJECT!



COMPANY PROFILE

❖ THE PHENOMINAL GROWTH OF RVG IS DUE TO ITS PROVEN SKILLS IN:

#Project Management

Safety Management & Quality Management

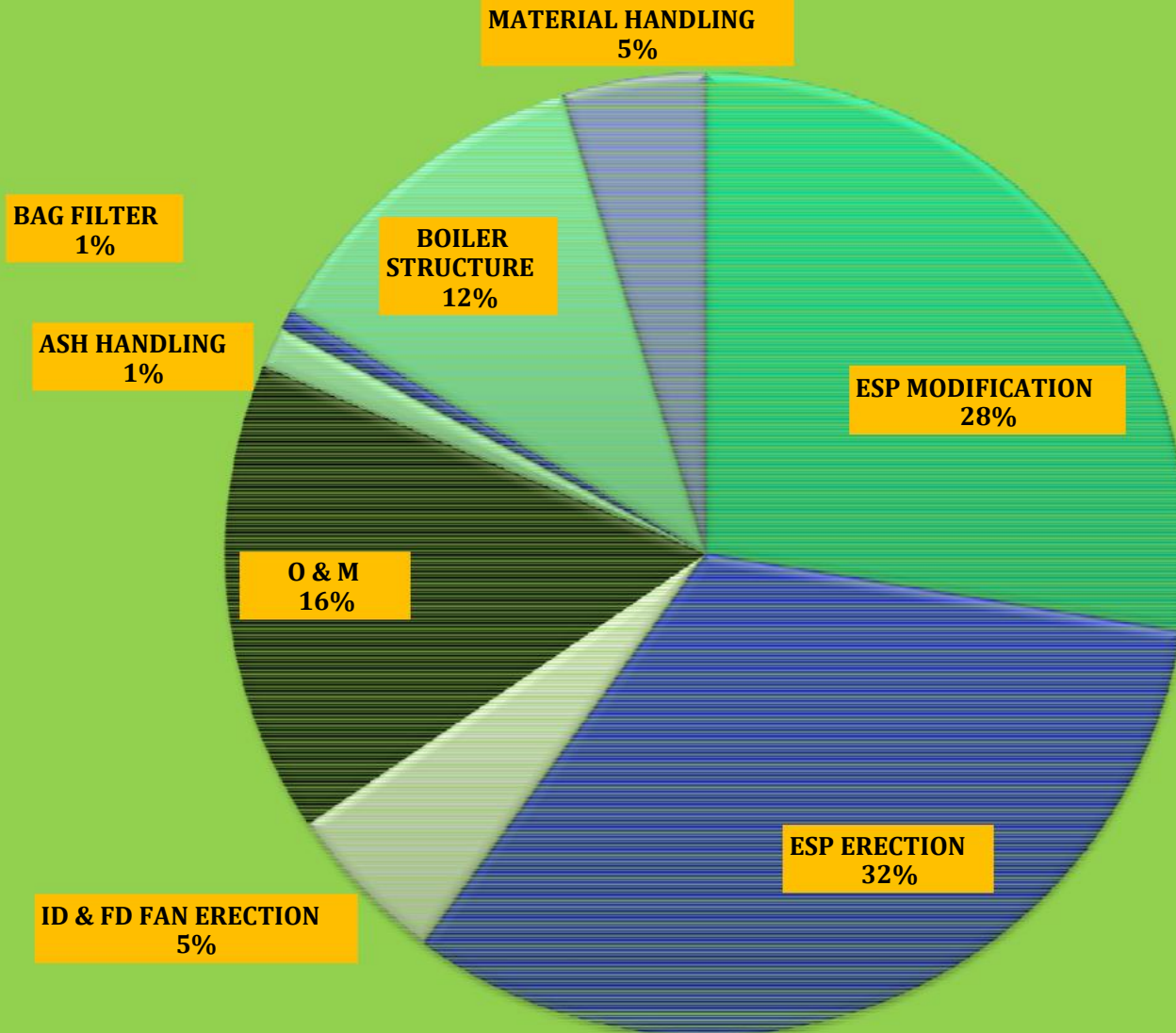
Successful deployment of manpower in large Volume over last couple of years

Motivated and dedicated manpower.



OUR GROWTH

PROJECTS EXECUTED TILL 2015





OUR ASSOCIATION



Our Customers

ABB



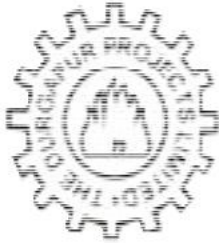
DCM SHRIRAM



Bhushan
POWER & STEEL

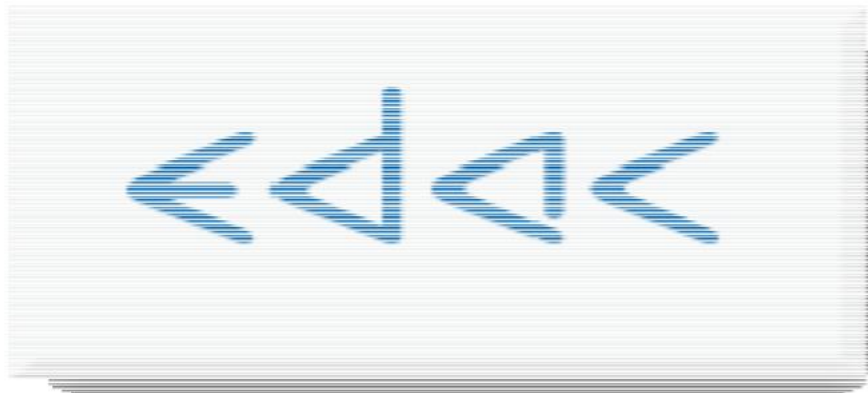
ACC

Our Customers



THE DURGAPUR PROJECTS LIMITED

A Government of West Bengal Enterprise



Our Customers

नालको

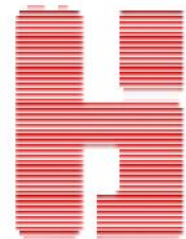


NALCO



L&T Construction

JINDAL
STEEL & POWER



bajaj hindusthan ltd.



Our Customers



sepcos
山东电建



vedanta



THERMAX

Sustainable solutions
Energy & Environment



Leadership with trust

VISA STEEL



FEW IMPORTANT PROJECTS

**EXECUTED & UNDER
EXECUTION**

A FEW PROJECT PROFILE

01.	NTPC – Kaniah, Talcher Super Thermal Project	Client – Alstom Projects India Ltd.
	Details of Project work	Erection and Commissioning work (executed in association with Tata Projects Ltd).
	Type of Plant	ESP for 3 x 500 MW Boiler
	Erection period	21 months
	Total quantity	16,000 MT approx
02.	WBPDC, Sagardighi Thermal Power Project	Client – Dongfang Electric Corporation
	Details of Project work	Erection work (executed in association with Tata Projects Ltd.)
	Type of Plant	Power Plant Boiler , ESP & Cooling Water Piping
	Type of equipment installed	Boiler structure, ESP, Equipments, Piping etc. for 1 x 300 MW Power Plant
	Erection period	20 months
	Total quantity	Boiler structure : 5,500 MT ESP : 4,000 MT Cooling Water Pipe line : 1,200 MT
03.	Balco Aluminium Expansion Project	Client -Alstom Projects India Ltd
	Details of Project work	Erection and Commissioning [executed in association with Larsen & Toubro (ECC Division) Ltd].
	Type of Plant	Smelter Fume Treatment Plant along with Alumina Handling system
	Type of equipment installed	FTP Plant with Exhaust Fans, Blowers, Compressors, Vibrating Screen, Piping, etc.
	Total quantity	4,200 MT approx
04.	Balco 1st Phase Smelter Plant	Client -Alstom Projects India Ltd
	Details of Project work	Erection and Commissioning work
	Type of Plant	Fume Treatment Plant along with Alumina Handling system
	Type of equipment installed	FTP Plant with Exhaust fans, Blowers, Compressors, Vibrating screen, Piping, M S Stack upto 80 Mtr height
	Erection period	14 months
	Total quantity	2,000 MT approx.



	Bhushan Power and Steel Ltd	Client -Alstom Project India Ltd.
	Details of Project work	Erection of Sinter Plant ESP and Cast House Dedusting System
	Type of equipment installed	ESPs and Dedusting System
	Erection period	16 months
	Total quantity	1,400 MT approx
06.	Bhushan Power and Steel Ltd	Client- Bhushan Power and Steel Ltd
	Details of Project work	Fabrication and Erection of Ducts, Stacks, Pent House, Piping work, Conveyor and Installation of equipments, Fans etc. for Sinter Plant and other area
	Erection period	16 months
	Total Fabrication quantity	1,275 MT
	Total Erection quantity	1,650 MT
07.	Jindal Steel & Power Ltd	Client - Alstom Project India Ltd.
	Details of Project work	Erection of ESPs for Sinter Plant
	Type of Plant	ESP
	Erection period	11 months
08.	Total quantity	1,250 MT
	Renusagar Power Division	Client- Alstom Project India Limited.
	Details of Project work	Dismantling, Erection and Commissioning for 2 x 272 TPH PF Fired Boiler
	Type of equipment installed	ESP Unit # 1 & 2
	Erection period	12 months
	Total Dismantling quantity	1,200 MT
	Total Erection quantity	1,600 MT
09	Tata Projects Ltd	Client – Sepco
	Details of Project work	Erection of Boiler, Auxiliary Structural work & ESP for Unit # 4,5,6 & 7 for 9 x 135 MW Power Plant
	Type of equipment installed	Boiler & ESP
	Erection period	24 months
	Total Boiler quantity	6,552 MT
	Total ESP quantity	4,000 MT
10	Tata Projects Ltd	Client – Sepco
	Details of Project work	Erection of 1x 600 MW Power Plant for Boiler Structure at Vedanta Aluminium IPP Project, Jharsuguda
	Type of equipment installed	Boiler & ESP
	Erection period	24 months
	Total Boiler quantity	5,185 MT

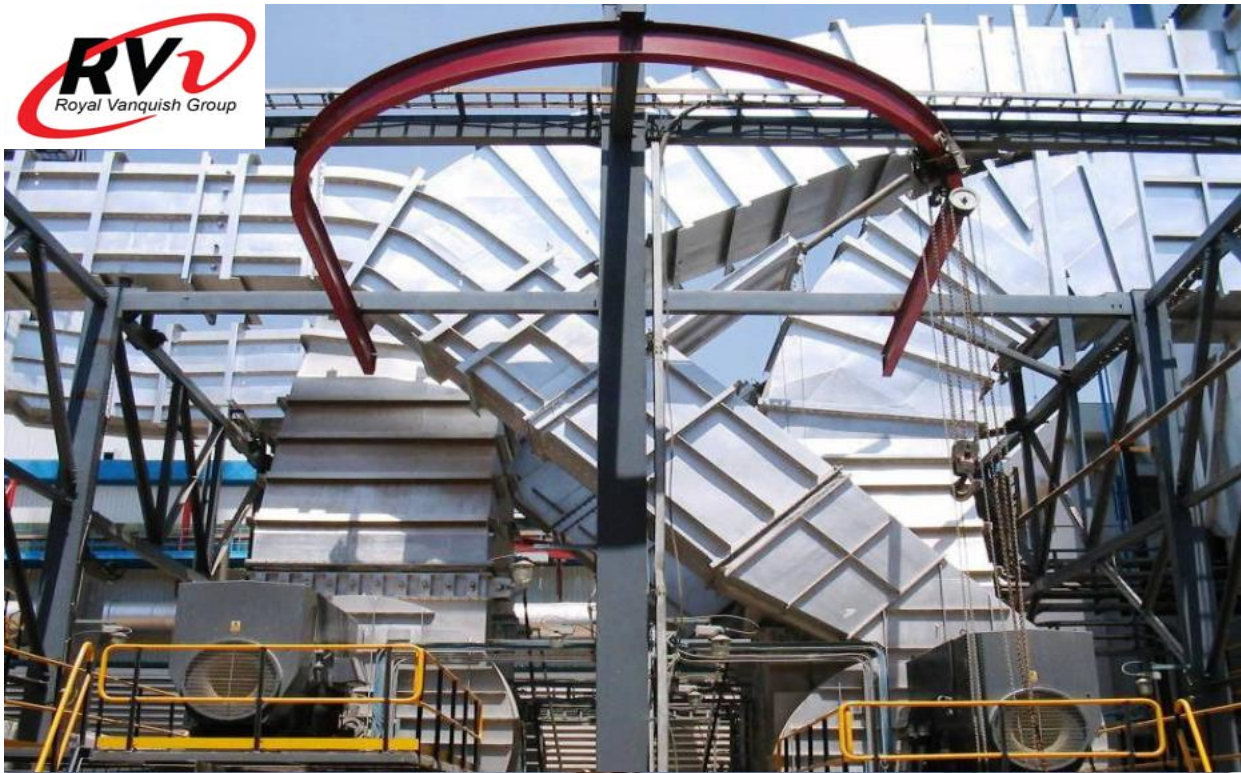


	Bhushan Power and Steel Ltd	Client -Alstom Project India Ltd.
	Details of Project work	Erection of Sinter Plant ESP and Cast House Dedusting System
	Type of equipment installed	ESPs and Dedusting System
	Erection period	16 months
	Total quantity	1,400 MT approx
06.	Bhushan Power and Steel Ltd	Client- Bhushan Power and Steel Ltd
	Details of Project work	Fabrication and Erection of Ducts, Stacks, Pent House, Piping work, Conveyor and Installation of equipments, Fans etc. for Sinter Plant and other area
	Erection period	16 months
	Total Fabrication quantity	1,275 MT
	Total Erection quantity	1,650 MT
07.	Jindal Steel & Power Ltd	Client - Alstom Project India Ltd.
	Details of Project work	Erection of ESPs for Sinter Plant
	Type of Plant	ESP
	Erection period	11 months
08.	Total quantity	1,250 MT
	Renusagar Power Division	Client- Alstom Project India Limited.
	Details of Project work	Dismantling, Erection and Commissioning for 2 x 272 TPH PF Fired Boiler
	Type of equipment installed	ESP Unit # 1 & 2
	Erection period	12 months
	Total Dismantling quantity	1,200 MT
	Total Erection quantity	1,600 MT
09	Tata Projects Ltd	Client – Sepco
	Details of Project work	Erection of Boiler, Auxiliary Structural work & ESP for Unit # 4,5,6 & 7 for 9 x 135 MW Power Plant
	Type of equipment installed	Boiler & ESP
	Erection period	24 months
	Total Boiler quantity	6,552 MT
	Total ESP quantity	4,000 MT
10	Tata Projects Ltd	Client – Sepco
	Details of Project work	Erection of 1x 600 MW Power Plant for Boiler Structure at Vedanta Aluminium IPP Project, Jharsuguda
	Type of equipment installed	Boiler & ESP
	Erection period	24 months
	Total Boiler quantity	5,185 MT

	Vedanta Aluminium Limited Power division CPP	Sepco III Electric Power Construction Corporation
	Details of Project work	Construction of ESP + FF modification (conversion of 2 field of ESP to Fabric filter) of 9 units of 9X135 MW CPP unit of Vedanta Aluminium Project
	Type of equipment installed	Installation of Bag Filter after dismantling of ESP internals of 2 fields, Ducting modification & replacement, ID fans with motor replacement etc for total 9 units
	Erection period	20 months
	Total Dismantling quantity	5,700.49 MT
	Total Erection quantity	4,266.749 MT
12	Reliance Power Limited	Reliance Infrastructure Limited
	Details of Project work	Erection of on-shore services for overland conveyor(OLC) for Sasan UMPP – 6X660 MW power plant , part-B along with its Electrical & Instrumentation
	Type of equipment installed	OLC conveyor including Electrical & Instrumentation work
	Erection period	20 months
	Total quantity	5,491.58 MT plus Electrical & Instrumentation work for total OLC job
13	Vedanta Aluminium Limited Power division IPP	Sepco III Electric Power Construction Corporation
	Details of Project work	Construction of Boiler no 3 & 4 – Modification work at Jharsuguda 4 X 600 MW IPP Project
	Type of equipment installed	Dismantling & Erection of LTSH, H type bar ECO & Erection of wearing shield, Typical bending pipes & manholes.
	Erection period	5 months
14	Coastal Energy Pvt Ltd	EDAC Engineering Ltd
	Details of Project work	Application of Insulation & Refectories work of Boiler No 1 & 2 & Turbine Insulation Package 2 X 600 MW
	Erection period	12 Months

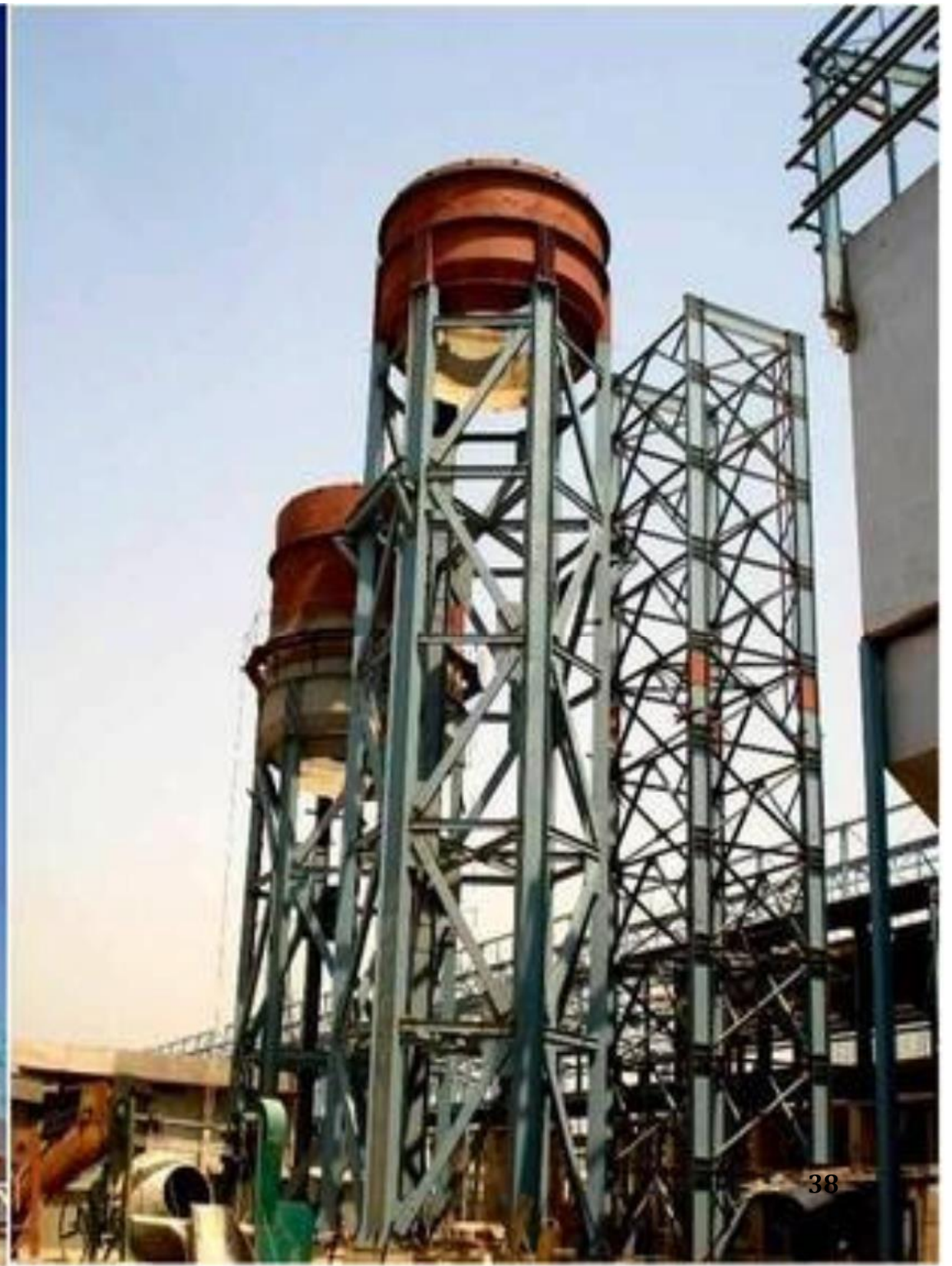


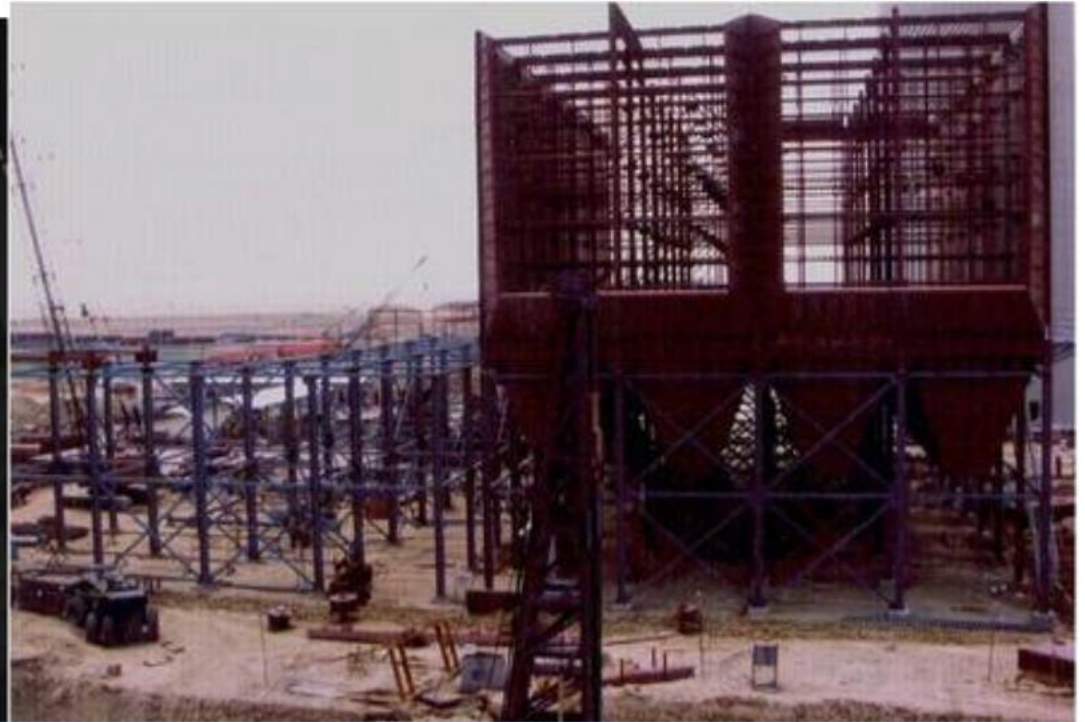
FEW OF OUR INSTALLATIONS







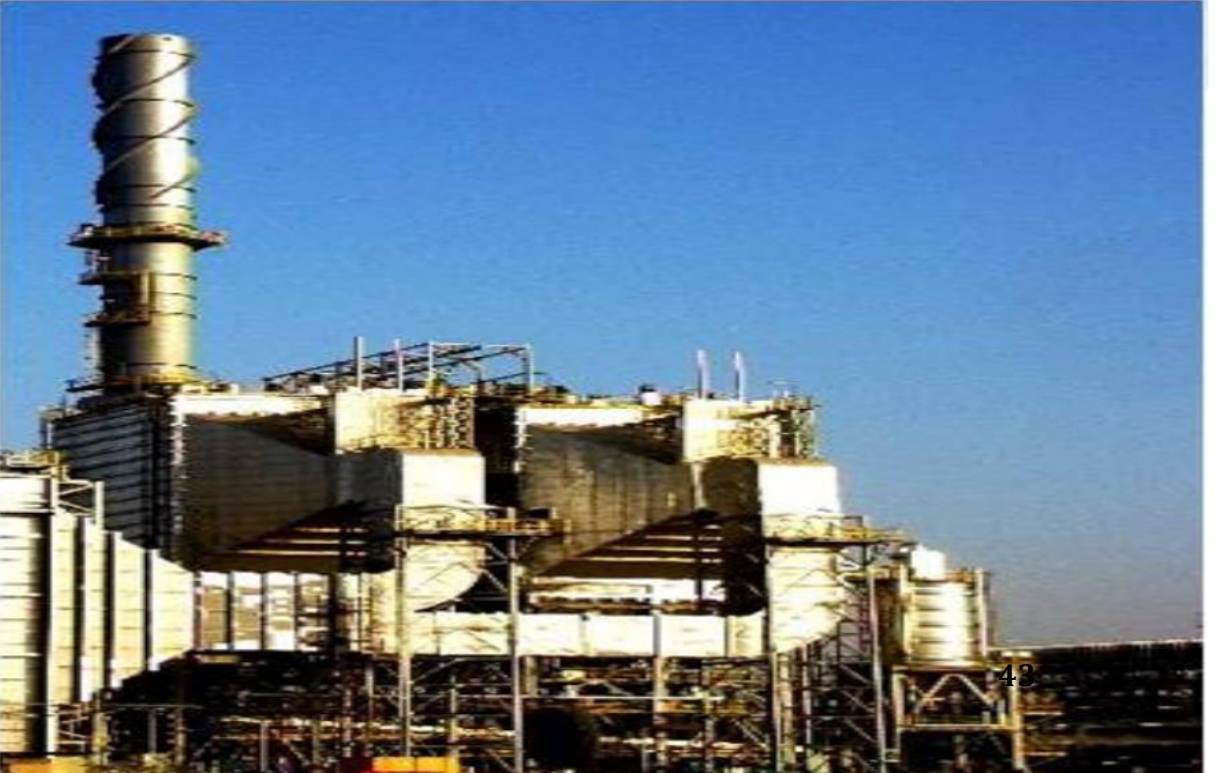








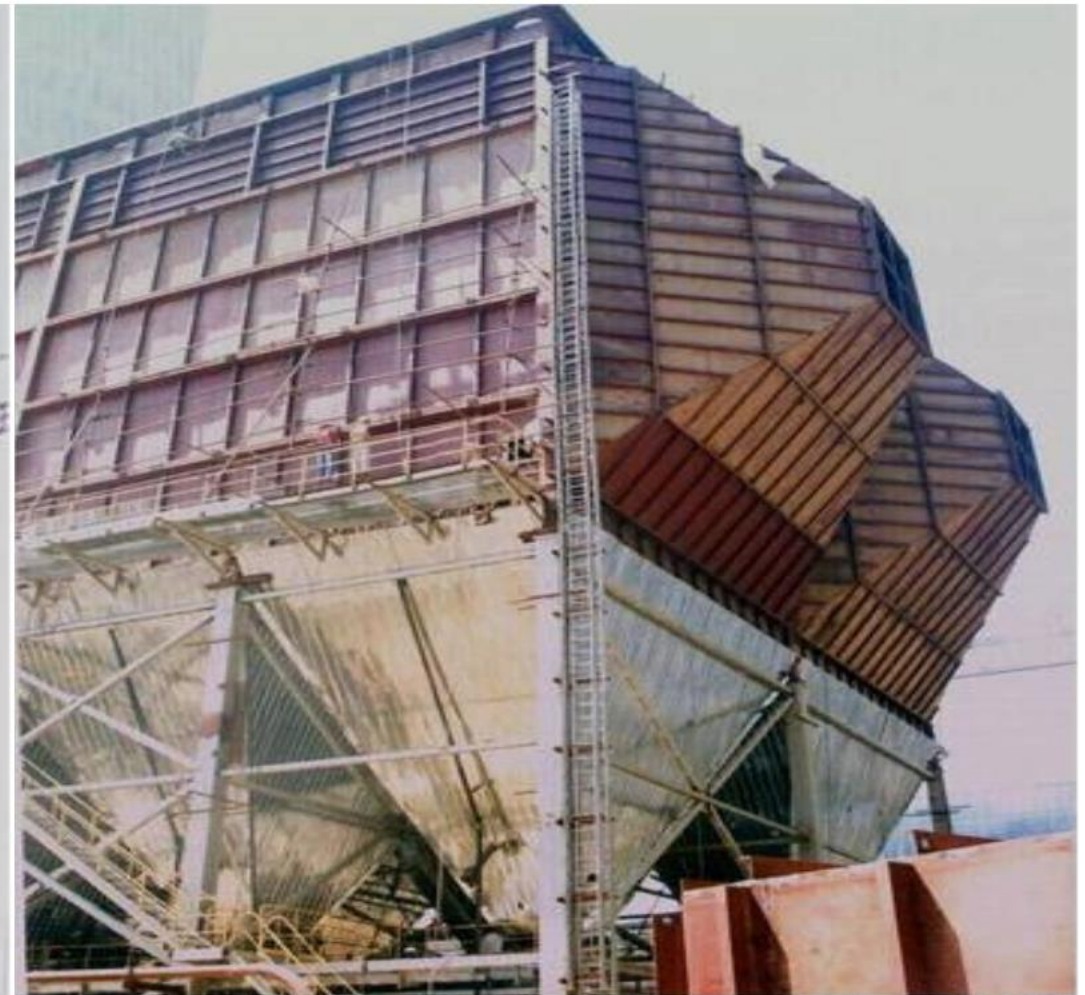






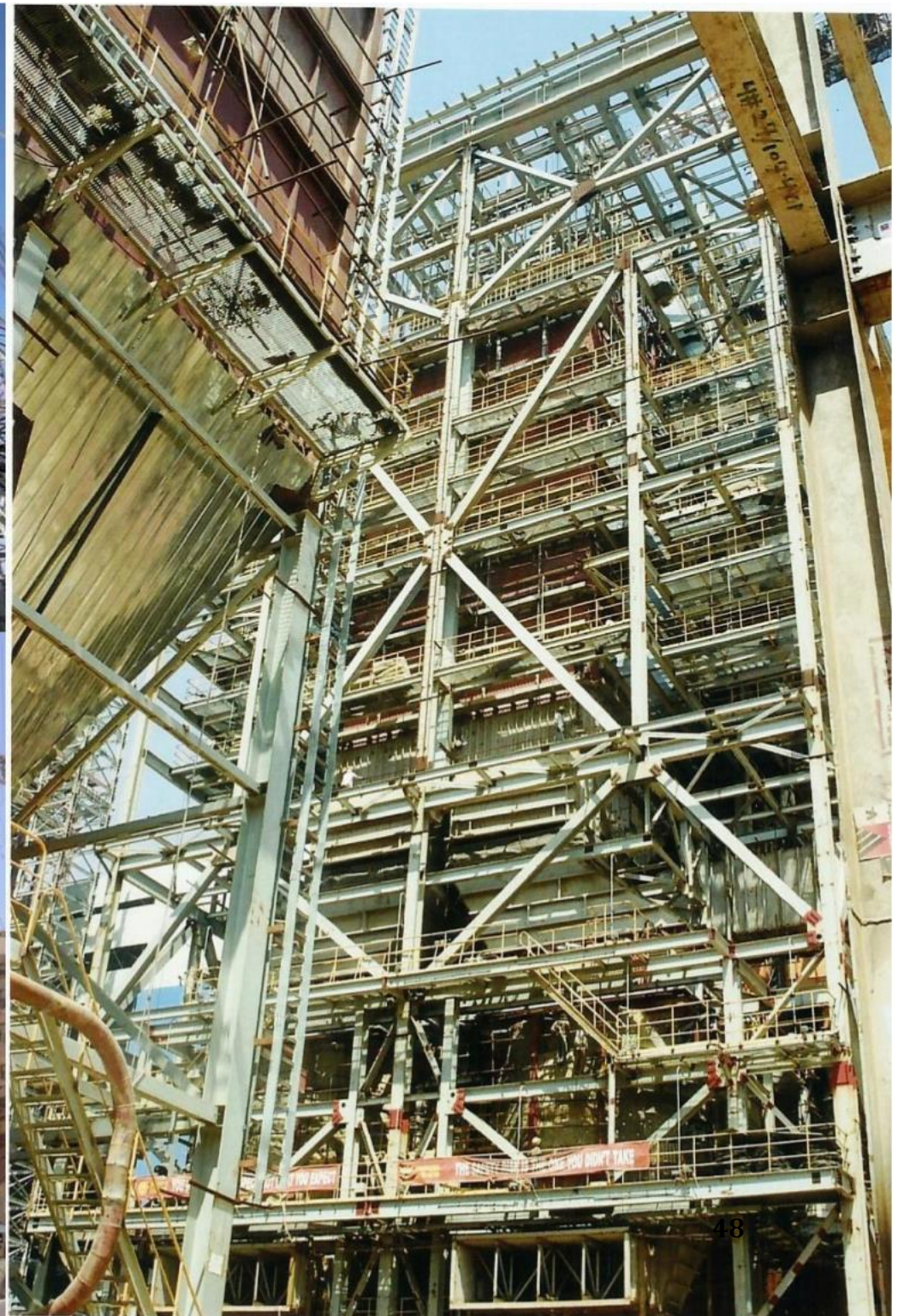
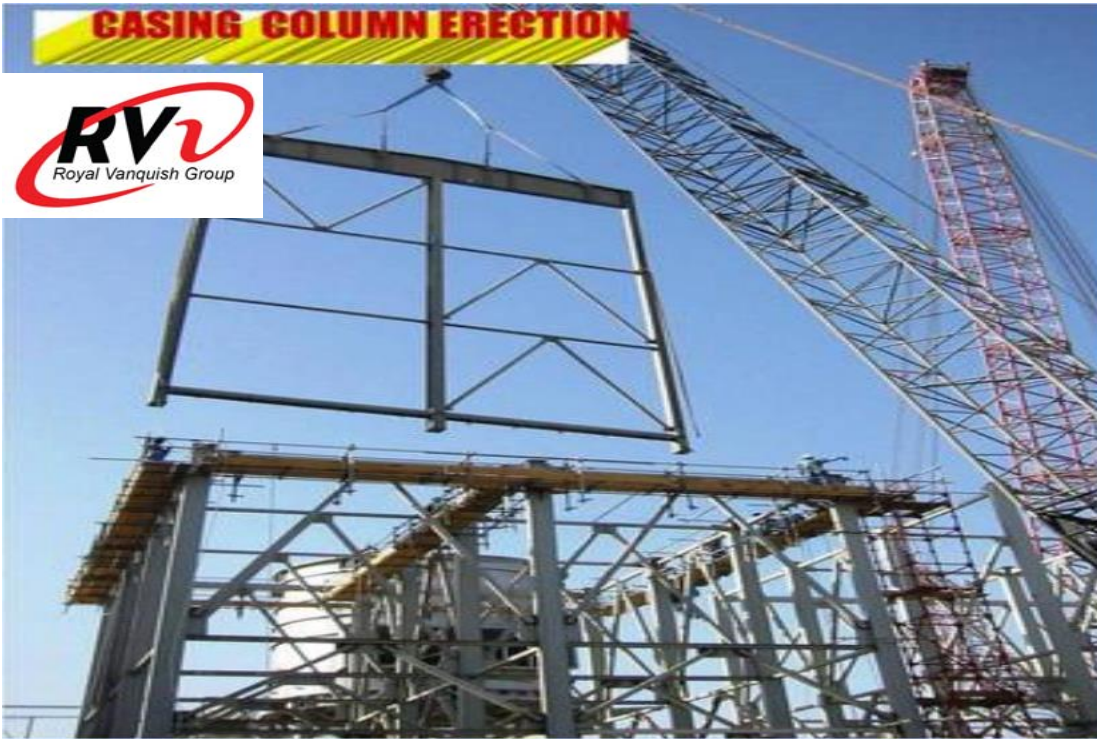
**SUPPORT STRUCTURE
FOR ESP**







CASING COLUMN ERECTION







WE CARE FOR SAFETY

&

OUR RECOGNITION



LIST OF MAJOR PROJECTS COMPLETED & UNDER CONSTRUCTION

LIST OF INSTALLATION

Year of Order	Main Client/Site	Subcontracted by	Year of Completion	Nature of Job Executed
Sept,2006	WBPDCCL - Sagardighi TPS	Tata Projects Ltd.	June,2007	Erection of structural for 1 x 300 MW Boiler for Sagardighi Thermal Power Station.
Dec,2006	Bathinda Thermal Power Station	Alstom Projects India Ltd. Kolkata	Marc,2007	Filtration and Dehydration of transformer oil for 62.8 KVA transformer of BHEL make -10 Nos.
Dec,2006	DVC, BTPS		Feb,2007	Repairing work for existing ESP of 210 MW Unit # 3
Jan,2006	Bathinda Thermal Power Station	Alstom Projects India Ltd. Kolkata	May,2007	Erection and commissioning of Boiler ESP for 2 x 110 MW ESP Unit # 1
Feb,2006	DVC, BTPS		June,2006	Repairing work for existing ESP of 210 MW Unit # 1
Feb,2006	WBPDCCL - Sagardighi TPS	Tata Projects Ltd	Aug,2007	Erection, testing and commissioning of ESP (4 Passes) 4000 MT for 2 x 300 MW Boiler
March,06	Bhushan Limited	Alstom Projects India Ltd. Kolkata	July,2007	Erection and commissioning of 4 Nos. ESPs at Sinter Plant and Dedusting fabric filter at Cast House including Insulation work.
March,06	DSCL Sugar - Loni, U. P		Dec.2006	Erection and commissioning of 2 Nos. ESP for 1 x 60 TPH 'ISGEC' make Boiler .
March,06	DSCL Sugar - Hariawan, U. P.		Dec.2006	Erection and commissioning of 2 Nos. ESP for 1 x 60 TPH 'ISGEC' make Boiler .
March,06	DSCL Sugar - Ajbapur, U.P.		May,2007	Erection and commissioning of 1 No. ESP for 1 x 60 TPH 'ISGEC' make Boiler .
March,06	Bhushan Limited		Dec.2006	Erection of 1 No. ESP for Kiln No. 4 of integrated Steel Plant at Jharsuguda in Orissa
May,06	Bathinda Thermal Power Station	Alstom Projects India Ltd. Kolkata	July,2006	Fabrication of Inlet/Outlet Funnel, Casing, Outer Roof and Emitting Suspension for 2 Nos. ESP for Unit# 1
June,06	WBPDCCL - Sagardighi TPS	Tata Projects Ltd	Aug,2007	Erection of Cooling water supply pipe lines between Pump House, Turbine Boiler, Cooling Water Heat Exchanger and Cooling Tower
June,06	Hindusthan Zinc Ltd., Chanderiya, Rajasthan	Alstom Projects India Ltd. Kolkata	June,07	Erection & Commissioning of ESP - 1 No.
July,06	Bharat Aluminium Company Ltd., Korba	Alstom Projects India Ltd. Kolkata	July,2007	Erection & Commissioning of 2 nos. FTP - VSS Smelter.
Sept,06	Bhushan Power & Steel Ltd.		Nov,2007	Fabrication and erection of Duct, Duct Support of Chimney and various ESP system and equipment for Sinter Plant of integrated Steel Plant at Rengali, Sambalpur, Orissa
Oct,06	Bhushan Power & Steel Ltd.		Oct,2007	Fabrication and Erection of Pent House structures for ESP's in shop Media & Water Piping work



Year of Order	Main Client/Site	Subcontracted by	Year of Completion	Nature of Job Executed
Nov,06	Jharsuguda Captive Power Plant by Vedanta Aluminium Ltd.(SEPCO) Project	Tata Projects Ltd.	Nov,07	Erection of Boiler and Auxiliary Structural work for Unit # 4 & 5 - SEPCO 9 x 135 MW
Nov,06	Renusagar Power Division Boiler# 3&4	Alstom Projects India Ltd.New Delhi	Dec,08	Dismantling of existing structure and erection, alignment of new parts and commissioning assistance of ESP for RPD Unit # 3 & 4, Boiler
Nov,06	Bhushan Power & Steel Ltd.	Alstom Projects India Ltd.New Delhi	June,08	Mechanical and Electrical Erection work for Cast House Dedusting Bag Filter with Stack
Jan,07	Bhushan Power & Steel Ltd.			Mechanical Erection of dedusting fume filter system (Bag filter assembly), Main fan & drive motors with commissioning (complete including Piping and valves in Bagfilter)
Feb,07	DSCL, Ajbapur	DSCL, Ajbapur	May,2007	Dismantling and Re erection of ESP at DSCL, Ajbapur
Feb,07	Hindusthan Zinc Ltd., Chanderiya, Rajasthan	Alstom Projects India Ltd. Kolkata	Sept,07	Installation, Testing, Pre-commissioning checks and commissioning of Electrical and Instrumentation work for Hot Gas ESP and Wet Gas ESP
Mar,07	Chandrapura Thermal Power Project, Bokaro	Unitech Machines Ltd	June,09	Piping and mechanical equipment erection and other misc. works for fire detection and protection system.
March,07	Bhushan Power & Steel Ltd.		Dec,07	Fabrication and Erection of Duct, Duct Support and Chimney of various ESP system and equipment for SMS II
Apr,07	Visa Steel Ltd. Jajpur, Orissa	Thermal Systems (Hyd) Pvt. Ltd	Dec,08	Erection and Commissioning of ESP for 2 x 500 TPD Sponge Iron Plant at Jajpur
May,07	Nalco Ltd.	Alstom Projects India Ltd.	Dec,09	Erection and Commissioning of GTC No. 7 & 8 for Aluminium Smelter Project
June,07	Jharsuguda Captive Power Plant by Vedanta Aluminium Ltd.(SEPCO) Project	Tata Projects Ltd.	June,08	Erection, Alignment, Welding, Testing & Commissioning ESPs for Unit # IV & V for 2 X 135 MW SEPCO Captive Power Plant, Jharsuguda, Orissa
June,07	ACC Ltd, Bargarh Cement Works		Sept,2007	Fabrication and Erection work for conversion of Kiln ESP into Bag House , Fans, Ducting etc. I ncluding dismantling
Aug,07	Hindusthan Zinc Ltd, Udaipur	Alstom Projects India Ltd.	July,08	Erection and Commissioning of Hot Gas ESP
Sept,07	Jharsuguda CPP by Vedanta Aluminium Ltd.(SEPCO) Project	Tata Projects Ltd.	Oct,08	Pre-assembly, Erection, Alignment, Welding, Testing of Pressure and Non pressure parts, Integral and main steam Piping work and Boiler Drum works of Unit # 4 Boiler of SEPCO 9 x135 MW Thermal Power Plant, Jharsuguda.
Sept,07	Hooghly Metcoke and Power Co. Ltd.Haldia, West Bengal	Tata Projects Ltd.	Aug,08	Erection, Alignment, Testing and Commissioning of rotating equipments and static equipments

Year of Order	Main Client/Site	Subcontracted by	Year of Completion	Nature of Job Executed
Nov,07	Bharat Aluminium Co. Ltd. Balco, Korba - Vedanta group		Feb,2008	Dismantling, Repair and erection work of damaged FTP for Aluminium smelter Plant.
Nov,07	JSW Energy Ltd. Toranagallu, Bellary, Karnatak	Spic Jel Engg. Construction Ltd.	Dec,08	Erection of ESP for 300 MW Boiler at JSW Energy Ltd.
Nov,07	Vedanta -Sepco	Tata Projects Ltd.	Feb,09	Erection of structure for Boiler and auxiliary of Unit # 7, Sepco 9 x 135 MW Thermal Power Plant (CPP), Jharsuguda Orissa
Dec,07	Jharsuguda IPP by Vedanta Aluminium Ltd.(SEPCO) Project	Tata Projects Ltd.	Dec,11	Erection of Structure for Boiler and Auxiliary of Unit # 1 - SEPCO 2 x 600 MW Thermal Power Plant, Jharsuguda, Orissa
Jan,08	Renusagar Power Plant	Alstom Projects India Ltd.	March,2008	Misc. job in Non pressure parts in Boiler No. 4 of Renusagar Power Division
Jan,08	Sepco 4 X 135 MW Thermal Power Plant (CPP)	Tata Projects Limited	July,08	Erection, Alignment, Testing and Assistance in Commissioning of PA, FD, ID, SA, & scanner cooling fans & motors & associate accessories for Unit # 4for 9 X 135 MW Thermal Power Plant
Jan,08	Bhushan Power & Steel Ltd.		Aug,08	Fabrication and Erection of Structural Bins works with liner plate
Feb,08	Jharsuguda Captive Power Plant by Vedanta Aluminium Ltd.(SEPCO) Project	Tata Projects Ltd.	Feb,09	Erection, Alignment, Welding, Testing & Commissioning ESPs for Unit # VI & VII for 2 X 135 MW SEPCO Captive Power Plant, Jharsuguda, Orissa
Mar,08	Jharsuguda IPP by Vedanta Aluminium Ltd.(SEPCO) Project	Tata Projects Ltd.	Dec,11	Erection of Structure for Boiler and Auxiliary of Unit # 4 - SEPCO 2 x 600 MW Thermal Power Plant, Jharsuguda, Orissa
March,08	Bhushan Power & Steel Ltd.		Nov,08	Fabrication and Erection of Duct and Duct Support for CSP Mill Caster -1 Steam Exhaust System at Rengali, Sambalpur, Orissa
March,08	Jharsuguda CPP by Vedanta Aluminium Ltd.(SEPCO) Project	Tata Projects Ltd.	Sept,08	Drum lifting, Alignment of Drum , final Alignment and plaing on Drum U-rods for Unit # 7 Boiler at Sepco 4 x 135 MW CPP Project, Jharsuguda, Orissa
April,08	DSCL Sugar, Ajbapur		Aug, 2008	Fabrication of ESP components like column, casing, outlet/inlet funnel, hopper gusset plate and hopper reinforcement plate etc.
May,08	Bhushan Power & Steel Ltd.	Alstom Projects India Ltd.	Aug,08	Erection of Bag House
May,08	JSW Energy Ltd.	Edac Engineering Ltd	July,2010	Erection of Unit -II ESP for 300 MW Boiler at JSW Energy Ltd, Toranagallu, Bellary, Karnataka
June,08	Hindusthan Zinc Ltd, Dariba	Alstom Projects India Ltd.	Sept,09	Erection and commissioning of electrical work for Hot & Wet Gas ESP
August,08	Visa Steel Project	United Conveyor Corporation (India) Pvt. Ltd, Kolkata	Sept,09	Mechanical Erection, Testing & Commissioning of Ash Handling system 3 x 25 MW, Captive Power Plant at Jajpur, Orissa

Order	Main Client/Site	Subcontracted by	Year of Completion	Nature of Job Executed
August,08	Jharsuguda CPP by Vedanta Aluminium Ltd.(SEPCO III) Project	Tata Projects Ltd.	Dec,08	Mechanical erection, testing and commissioning of PA, FD, ID, SA and scanner cooling fan for Unit # 6 & 7
August,08	Jharsuguda CPP by Vedanta Aluminium Ltd.(SEPCO III) Project	Tata Projects Ltd.	Dec,08	Mechanical erection, testing and commissioning of PA, FD, ID, SA and scanner cooling fan for Unit # 5
August,08	Jharsuguda CPP by Vedanta Aluminium Ltd.(SEPCO III) Project	Tata Projects Ltd.	Aug,08	Dismantling, transportation, erection, testing and commissioning of 40T - Tower crane
Sept,08	Bajaj Hindusthan Limited,		Sept,08	ESP maintenance work including rectification of collecting electrode, rapping mechanism and alignment for field no. 1,2 & 3 at Golagokarannath- sugar,Lakhimpur, Kheri
Sept,08	Visa Steel Limited	Thermal System (Hyd) Pvt. Ltd.	Dec,08	Fabrication of duct
Oct,08	JSW Energy Ltd.	Edac Engineering Ltd	Feb,12	Erection of Unit # III & IV ESP for 2 X 300 MW Thermal Power Project, Toranagallu, Bellary, Karnataka
Oct,08	JSW Energy Ltd.	Edac Engineering Ltd	Dec,10	Erection of Unit - II ESP for 4 X 300 MW Coal Based Thermal Power Project, Jaigad, Ratnagiri, Maharashtra
Nov,08	Bhushan Steel & Strip Limited	L&T, ECC Division	Feb,09	Erection of Bag House No. 1 for SMS and Duct Erection
Jan,09	Indian Iron & Steel Co. Ltd (ISP)	L&T, ECC Division	Dec, 2010	Erection of 4 Nos. ESP of Waste Gas Area
Jan,09	Shyam Dri Power Ltd. Sambalpur	Veasons Energy Systems Pvt.Ltd.	Sept,09	Erection of ESP for 1 x 135 TPH Boiler
Feb,09	JSW Energy Ltd.	Edac Engineering Ltd	Dec,2010	Erection of Boiler Structure for Unit # 4 for 4 x 300 MW Coal base Thermal Power Project at Jaigad, Ratnagiri
Feb,09	Jharsuguda IPP by Vedanta Aluminium Ltd.(SEPCO) Project	Tata Projects Ltd.	Feb,12	Erection of Pressure parts for unit # 4 of Sepco 2 X 600 M W Thermal Power Plant Jharsuguda, Orissa
Mar,09	Vedanta Aluminium, Jharsuguda	Alstom Projects India Ltd.	Feb,12	Mechanical erection contract for Unit # 31 & 32, FTP Project at Aluminium Smelter. Phase II
Apr,09	Jharsuguda IPP by Vedanta Aluminium Ltd.(SEPCO) Project	Tata Projects Ltd.	July,11	Erection of ESP and Bag Filter for Unit # 4 of Sepco 2 x 600 MW Thermal Power Plant at Jharsuguda, Orissa
Apr,09	DVC, Chandrapura		June,09	Overhauling of ESP of Unit # 3
May,09	Vedanta Aluminium, Jharsuguda	Alstom Projects India Ltd.	Mar,11	Erection of FTP unit # 51 for Vedanta Aluminium, Jharsuguda
May,09	DVC, Mejia-BTPS Project	Unitech Machines Ltd	May,11	Unloading, Handling, Storage, Fabrication, Erection, Testing, Commissioning of site Fabricated HFO, LDO Tanks, Piping, Mechanical Equipment Erection work for Fuel oil Unloading & Transport System 2X 500 MW, Unit # 1 & 2

Year of Order	Main Client/Site	Subcontracted by	Year of Completion	Nature of Job Executed
June,09	Jindal Steel & Power Limited		July,09	Sinter Plant ESP Rectification for 2 nos field
July,09	Visa Steel Limited		July,09	ESP Alignment & Replacement of damage Insulator at Kalinganagar Industrial Complex, Jakhpura, Jajpur, Orissa
July,09	Grasim Industries Ltd. Katputli, Rajasthan	Thermax Engineering Construction Co. Ltd.	Sept,09	Replacement of Electrodes for Boiler ESP at Grasim Industries Ltd. Katputli, Rajasthan
July,09	BHEL	U B Engineering	April,11	Erection of ESP 2 X 600 MW for NC TPS Stage II, Athipattu, North Chennai
Aug,09	DVC, Chandrapura		Oct,09	Overhauling of ESPs (Left,Right & Addl.) of Unit # 2 - 210 MW Boiler ESP at Bokaro 'B' Thermal Power Station
Aug,09	Bajaj Hindusthan Limited		Sept,09	Repair and alignment of 80 Ton Boiler ESP at Bajaj Hindusthan Ltd. Paliakalan, Lakhimpur, Kheri
Sept,09	Jharsuguda IPP by Vedanta Aluminium Ltd.(SEPCO) Project	Tata Projects Ltd.	Feb,11	Erection of ESP & Bag Filter of Unit # 1 of SEPCo 2 x 600 MW Thermal Power Plant (IPP) at Jharsuguda, Orissa
Oct,09	Jindal Steel & Power Limited		April,2010	Overhauling & Maintenance of Unit # 3 & 6 of Process ESP at Jindal Steel & Power
Jan,10	JSW Energy Ltd.	Edac Engineering Ltd	Dec,10	Erection of ESPfor 4 X 300 MW Thermal Power Plant Project at JSW Energy Ltd,Ratnagiri
Jan,10	Vedanta Aluminium / Alstom Project	Simplex Infrastructures Ltd	Sept,2010	Fabrication and Erection of chomical hopper and top deck platform structures for silo at FTP -61 of fume treatment plant at Vedanta Aluminium Smelter Project Site , Jharsuguda, Orissa
Apr,10	Jindal Steel & Power Ltd - Raigarh		March,2011	AMC for waste Gas ESP maintenance
June,10	ESSAR Projects India Ltd		Under execution	Erection, Alignment, Welding, Commissioning for 9 field of ESP II for 2 X 600 MW Mahan Thermal power Project at Bandhoura,MP
July,10	Vedanta Aluminium, Jharsuguda	Alstom Projects India Ltd.	March,2010	Mechanical Erection work for FTP 51 at Vedanta Aluminium Smelter Project, Jharsuguda
Aug,10	JSW Energy Ltd.	Edac Engineering Ltd	Oct,2010	Emitting frame Fabrication work for 4 X 300 MW Thermal Power Plat at JSW Energy Ltd, Ratnagiri.
Aug,10	Bhushan Steel & Strip Ltd , Angul	Larsen & Tourbo - ECC Division	March,12	Erection of waste gas and dedusting plant ESP at Sinter Plant , BSSL Angul
Sept,10	Jindal Energy (Ratnagiri Ltd)		Oct,2010	Repairing of Expansion joints
Sept,10	Parle Biscuit(P) Ltd, Sugar Division, Bahraich UP		Nov,2010	Overhauling maintenance of Alstom make two field ESP

Year of Order	Main Client/Site	Subcontracted by	Year of Completion	Nature of Job Executed
Sept,10	Jindal Steel & Power Ltd, Raigarh		Dec,2010	2 nos ESP field Rectification / Maintenance job at Sinter Plant
Oct,10	Jharsuguda IPP by Vedanta Aluminium Ltd.(SEPCO) Project	Tata Projects Ltd.	Feb,12	Application of insulation, Cladding and Refractories for U # 4 of 2 X 600 MW Boiler and ESP
Oct,10	Mutiara Thermal Power Plant, M/S CEPL , Melamaruthur, Tuticorin	Edac Engineering Ltd	Under execution	Erection of ESP for U # 1 & 2 of 2 X 600 MW Mutiara Thermal Power Plant Melamaruthur, Tuticorin
Nov,10	Sepco GMR Project, Angul	UB Engineering Ltd	March,12	Erection of Boiler Structure for U # 1 for 4 X 350 MW Coal based Kamalanga Thermal Power Project, Angul Orissa
Dec,10	SAIL, RSP	Tata Projects Ltd.	Under execution	Erection of 2 Nos ESP for cast house at SAIL, RSP
Dec,10	JSW Energy Ltd. (Ratnagiri)	Edac Engineering Ltd	June,11	Erection of dry bottom ash handling system for U# 3 of 4 X 300 MW Thermal Power Plant Project
Dec,10	Mutiara Thermal Power Plant, M/S CEPL , Melamaruthur, Tuticorin	Edac Engineering Ltd	Under execution	Erection of No.2 Boiler Structure 2 X 600 MW
Jan,11	JSW Energy Ltd. (Ratnagiri)	Edac Engineering Ltd	Aug,11	Erection of U # IV Boiler fans for 4 X 300 MW Thermal Power Plant Project, Ratnagiri
Jan,11	JSW Energy Ltd. (Ratnagiri)	Edac Engineering Ltd	Aug,11	Erection of dry bottom ash handling system for U# 4 of 4 X 300 MW Thermal Power Plant Project
May,11	Jaypee Nigrie Thermal Power Plant	L&T-ECC Power Division	June,12	Erection of Boiler structure for 2x 660 MW of Super Critical Power Plant
June,11	SAIL, RSP	Tata Projects Ltd.	Under execution	Erection of ESP in Stock House
July,11	Vedanta Aluminium CPP Project	SEPCO	Aug,13	Construction of ESP + FF modification (conversion of two fields of ESP to Fabric Filter) of 9 x 135 MW CPP Unit # 1,2 &3
July,11	Vedanta Aluminium CPP Project	SEPCO	Aug,13	Construction of ESP + FF modification (conversion of two fields of ESP to Fabric Filter) of 9 x 135 MW CPP Unit # 4,5,6,7,8 & 9
July,11	Jindal Steel & Power Limited		June,12	Sinter process waste gas ESP maintenance activities
Aug,11	Vedanta Aluminium, Jharsuguda	Alstom Projects India Ltd.	Dec,12	Fabric Fixing for Hopper Bottom Box for 8 nos FTP unit
Oct,11	Raghuathpur Thermal Power Plant	Driplex Water Engg Ltd	Dec,12	Fabrication,Erection & Alignment, Testing & Commissioning of equipments for DM plant

Order	Main Client/Site	Subcontracted by	Year of Completion	Nature of Job Executed
Oct,11	M/S CEPL-Tuticorin	EDAC Engineering Ltd	Under execution	Erection of U # 2 ducting of 2 X 600 MW of Mutiara Thermal Power Plant, Tuticorin
Nov,11	Raghunathpur Thermal Power Plant Stage I	Driplex Water Engg ltd	Dec,12	Fabrication,Erection & Alignment, Testing & Commissioning of equipments for PT plant
Dec,11	ESSAR Projects India Ltd		Under execution	Erection of Coal primary air Duct & Duct support
Mar,12	M/S CEPL-Tuticorin	EDAC Engineering Ltd	Under execution	Erection of Coal Piping at Unit # 1 at 2 X 600 MW Mutiara Thermal Power Plant Project, Tuticorin
Mar,12	M/S CEPL-Tuticorin	EDAC Engineering Ltd	Under execution	Erection of Coal Mill at Unit # 1 at 2 X 600 MW Mutiara Thermal Power Plant Project, Tuticorin
Apr,12	ESSAR Projects India Ltd , Tori		Under execution	Erection, Alignment, Welding, etc Boiler structure of 1 unit 3 X 600 MW Thermal Power Plant at Tori, Jharkhand
May,12	Vedanta Aluminium, Jharsuguda	Alstom Projects India Ltd.	Under execution	Erection, Alignment & Welding of additional work for FTP 32, FTP 52 & FTP 62 at Vedanta Aluminium Smelter Project, Jharsuguda
July,12	M/S CEPL-Tuticorin	EDAC Engineering Ltd	Under execution	Erection of Ducting Unit # 1 for 2 X 600 MW Mutiara Thermal Power Plant, Tuticorin
July,12	ESSAR Projects India Ltd, Tori		Under execution	Erection, Alignment , Welding commissioning etc of ESP for 1 unit of 3 X 600 MW Thermal Power Plant at Tori, Jharkhand
Sept,12	Reliance Infrustructure Limited		Sept,13	Onshore service(Erection, Testing & Commissioning) for Part - B of Overland Conveyor (OLC) for 6 X 600 MW Sasan Ultra Mega Power Project, MP
Oct,12	Bhushan Power & Steel		Dec,12	Overhauling & Maintenece of 4 fields ESP of Sinter Plant area of integrated steel plant at Rengali, Orissa
Jan,13	M/S CEPL-Tuticorin	EDAC Engineering Ltd	Under execution	Erection of Coal Piping at Unit # 2 at 2 X 600 MW Mutiara Thermal Power Plant Project, Tuticorin
Jan,13	M/S CEPL-Tuticorin	EDAC Engineering Ltd	Under execution	Ducting Rectification work at Unit # 1 for 2 X 600 MW Mutiara Thermal Power Plant, Tuticorin
Feb,13	ESSAR Projects India Ltd, Tori		Under execution	Fabrication of Platforms in Boiler Unit # 1 at 3 X 600 MW Tori Power Plant, Jharkhand
May,13	Jindal Steel & Power Limited		Under execution	ESP field Rectification work at Sinter plant Raigarh, Chattisgarh
July,13	Vedanta Aluminium, Jharsuguda	Sepeco III electric power construction corporation	Oct,13	Construction of Boiler # 3 modification work for 4 X 600 MW coal based independent power project

Year of Order	Main Client/Site	Subcontracted by	Year of Completion	Nature of Job Executed
July,13	Reliance Infrastructure Limited		Under execution	Cladding, sheeting and purlin work in conveyor at CHP for 6 X 660 MW Sasan ultra mega power project at MP
Oct,13	Jindal Steel & Power Limited		Under execution	ESP field Rectification work at Sinter plant Raigarh, Chattisgarh
Oct,13	Reliance Infrastructure Limited		Under execution	Erection of CHP work from coal silo to TP 17 and coal silo to TP 1B at Sasan Ultra Mega Power Project, MP
Nov,13	Vedanta Aluminium, Jharsuguda	Seeco III electric power construction corporation	Under execution	Construction of Boiler # 4 modification work for 4 X 600 MW coal based independent power project at Vedanta Aluminium Ltd- Jharsuguda, Orissa
Nov,13	Reliance Infrastructure Limited		Under execution	Erection of CHP structure and equipments from SRP to TH - 5 at Sasan Mine end at Sasan Ultra Mega Power Project, MP
Dec,13	NTPC Lara STPP	EDAC Engineering Ltd	Under execution	Erection of Boiler Structure and Fabrication & Erection of coal silo for 2X 8000 MW Lara STPP Raigarh , Chattisgarh
Dec,13	Coastal Energy Pvt Ltd	EDAC Engineering Ltd	Under execution	Application of Insulation for U # 2 of 2 X 600 MW Mutiara Thermal Power Plant
Dec,13	Coastal Energy Pvt Ltd	EDAC Engineering Ltd	Under execution	Application of Refractory for U # 2 of 2 X 600 MW Mutiara Thermal Power Plant

DETAILS OF CURRENT COMMITMENT

Year of Order	Main Client/Site	Subcontracted by	Year of Completion	Nature of Job Executed
June,10	ESSAR Projects India Ltd		Under execution	Erection, Alignment, Welding, Commissioning for 9 field of ESP II for 2 X 600 MW Mahan Thermal power Project at Bandhoura,MP
Oct,10	M/S CEPL - Tuticorin	Edac Engineering Ltd	Under execution	Erection of ESP for U # 1 & 2 of 2 X 600 MW Mutiara Thermal Power Plant Melamaruthur, Tuticorin
Dec,10	SAIL, RSP	Tata Projects Ltd.	Under execution	Erection of 2 Nos ESP for cast house at SAIL, RSP
Dec,10	M/S CEPL - Tuticorin	Edac Engineering Ltd	Under execution	Erection of No.2 Boiler Structure 2 X 600 MW Mutiara Thermal Power Plant Melamaruthur, Tuticorin
June,11	SAIL, RSP	Tata Projects Ltd.	Under execution	Erection of ESP in Stock House
Oct,11	M/S CEPL - Tuticorin	Edac Engineering Ltd	Under execution	Erection of U # 2 Ducting of 2 X 600 MW of Mutiara Thermal Power Plant, Tuticorin
Dec,11	ESSAR Projects India Ltd		Under execution	Erection of Cold Primary Air Duct & Duct support
Mar,12	M/S CEPL-Tuticorin	EDAC Engineering Ltd	Under execution	Erection of Coal Piping at Unit # 1 at 2 X 600 MW Mutiara Thermal Power Plant Project, Tuticorin
Mar,12	M/S CEPL-Tuticorin	EDAC Engineering Ltd	Under execution	Erection of Coal Mill at Unit # 1 at 2 X 600 MW Mutiara Thermal Power Plant Project, Tuticorin
Apr,12	ESSAR Projects India Ltd		Under execution	Erection, Alignment, Welding, etc Boiler structure of 1 unit 3 X 600 MW Thermal Power Plant at Tori, Jharkhand
May,12	Vedanta Aluminium, Jharsuguda	Alstom Projects India Ltd.	Under execution	Erection, Alignment & Welding of additional work for FTP 32, FTP 52 & FTP 62 at Vedanta Aluminium Smelter Project, Jharsuguda
July,12	M/S CEPL-Tuticorin	EDAC Engineering Ltd	Under execution	Erection of Ducting Unit # 1 for 2 X 600 MW Mutiara Thermal Power Plant, Tuticorin
July,12	ESSAR Projects India Ltd		Under execution	Erection, Alignment , Welding commissioning etc of ESP for 1 unit of 3 X 600 MW Thermal Power Plant at Tori, Jharkhand
Jan,13	M/S CEPL-Tuticorin	EDAC Engineering Ltd	Under execution	Erection of Coal Piping at Unit # 2 at 2 X 600 MW Mutiara Thermal Power Plant Project, Tuticorin
Jan,13	M/S CEPL-Tuticorin	EDAC Engineering Ltd	Under execution	Ducting Rectification work at Unit # 1 for 2 X 600 MW Mutiara Thermal Power Plant, Tuticorin

DETAILS OF CURRENT COMMITMENT

Year of Order	Main Client/Site	Subcontracted by	Year of Completion	Nature of Job Executed
Feb,14	ESSAR Projects India Ltd		Under execution	Fabrication of Platforms in Boiler Unit # 1 at 3 X 600 MW Tori Power Plant, Jharkhand
May,14	Jindal Steel & Power Limited		Under execution	ESP field Rectification work at Sinter plant Raigarh, Chattisgarh
July,14	Reliance Infrustructure Limited		Under execution	Cladding, sheeting and purlin work in conveyor at CHP for 6 X 660 MW Sasan ultra mega power project at MP
Oct,15	Jindal Steel & Power Limited		Under execution	ESP field Rectification work at Sinter plant Raigarh, Chattisgarh
Oct,15	Reliance Infrustructure Limited		Under execution	Erection of CHP work from coal silo to TP 17 and coal silo to TP 1B at Sasan Ultra Mega Power Project, MP
Nov,15	Vedanta Aluminium, Jharsuguda	Sepco III electric power construction corporation	Under execution	Construction of Boiler # 4 modification work for 4 X 600 MW coal based independent power project at Vedanta Aluminium Ltd- Jharsuguda, Orissa
Nov,15	Reliance Infrustructure Limited		Under execution	Erection of CHP structure and equipments from SRP to TH - 5 at Sasan Mine end at Sasan Ultra Mega Power Project, MP
Dec,15	NTPC Lara STPP	EDAC Engineering Ltd	Under execution	Erection of Boiler Structure and Fabrication & Erection of coal silo for 2X 8000 MW Lara STPP Raigarh , Chattisgarh
Dec,15	Coastal Energy Pvt Ltd	EDAC Engineering Ltd	Under execution	Application of Insulation for U # 2 of 2 X 600 MW Mutiara Thermal Power Plant
Dec,15	Coastal Energy Pvt Ltd	EDAC Engineering Ltd	Under execution	Application of Refactory for U # 2 of 2 X 600 MW Mutiara Thermal Power Plant



LIST OF OUR FEW TOOLS & PLANTS
IT IS A PROCESS TO SATISFY THE
NEED OF THE PROJECT

LIST OF MAJOR TOOLS, TACKLES & MACHINERY

SL NO.	D E S C R I P T I O N	QTY	UNIT
01	CRANE ESCORT MAKE MODEL HYDRA - CAPACITY 8 T	03	NOS
02	CRANE ESCORTS - MODEL HYDRA 10 - 10 TONS CAPACITY	01	NO
03	CRANE ESCORTS - MODEL HYDRA 14 - 14 TONS CAPACITY	01	NO
04	TROLLY FOR MATERIAL HANDLING - 9 TON CAPACITY	02	NOS
05	ELECTRIC WINCH - 5 TON CAPACITY	06	NOS
06	ELECTRIC WINCH - 3 TON CAPACITY	06	NOS
07	ELECTRIC WINCH - 1 TON CAPACITY	03	NOS
08	MANUAL WINCH - 5 TON CAPACITY	05	NOS
09	POWER ROLLER PLATE BENDING UPTO 16 MM THICK	01	NO
10	POWER ROLLER PLATE BENDING UPTO 10 MM THICK	01	NO
11	WELDING RECTIFIER	47	NOS
12	WELDING MACHINES TRANSFORMER	152	NOS
13	ANGLE DERRICK - 30 MTRS. LENGTH	03	SETS
14	MAX PULLER OF DIFFERENT CAPACITIES	25	NOS
15	WIRE ROPE PULLEY DIRRERENT CAPACITIES	75	NOS
16	RUSSA PULLEY	75	NOS
17	HAND TROLLY FOR MATERIAL HANDLING	02	NOS
18	PILLER DRILL MACHINE 1 1/2 INCH CAPACITY	04	NOS
19	DRILL MACHINE DIFFERENT CAPACITIES	13	NOS
20	GRINDING MACHINE DIFFERENT CAPACITIES	40	NOS
21	CUTTING TORCH WITH REGULATORS	65	NOS
22	TURN BUCKLE	100	NOS
23	"D" SHACKLE	275	NOS
24	WIRE ROPE - 25 MM	2000	MTRS
25	WIRE ROPE - 16 MM	5000	MTRS
26	WIRE ROPE - 10 MM	1250	MTRS
27	WIRE CLAMPS	350	NOS
28	MECHANICAL JACK 12 TO 50 TON CAPACITY	10	NOS
29	POWER DISTRIBUTION BOARD	06	NOS
30	HYDRAULIC JACK - 3 TON TO 12 TON CAPACITY	10	NOS

SL NO.	D E S C R I P T I O N	QTY	UNIT
31	"D" SPANNER OF DIFFERENT SIZES	150	NOS
32	RING SPANNER OF DIFFERENT SIZES	160	NOS
33	SLIDE TYPE ADJUSTABLE WRENCH OF DIFFERENT SIZES	38	NOS
34	FILES OF DIFFERENT TYPE AND SIZES	25	NOS
35	WELDING CABLE - 600 AMPS	9500	MTRS
36	GAS CUTTING HOSE PIPE	8000	MTRS
37	CHAIN PULLEY BLOCK OF DIFFERENT CAPACITIES	50	NOS
38	CONCRETE MIXTURE : DIESEL HOPPER	01	NO
	CONCRETE MIXTURE : ELECTRIC HOPPER	02	NOS
	SMALL MIXTURE	02	NOS
39	CONCRETE VIBRATOR : ELECTRIC	01	NO
	CONCRETE VIBRATOR : PETROL	02	NOS
40	DEWATERING PUMP - DIESEL 5 HP	03	NOS
41	ELECTRIC COMPRESSOR	01	NO
42	BREAKER	06	NOS
43	SHUTTERING EQUIPMENT - PLY BOARD	1000	M ²
44	SHUTTERING EQUIPMENT - STEEL BOARD	500	M ²
45	ROLLING MACHINE	5	NOS
46	GROOVING MACHINE	6	NOS
47	SCHERING MACHINE	4	NOS
48	ELECTRIC DRILL MACHINE	10	NOS
49	SELFTYPE DRILL MACHINE	4	NOS
50	RIGHT ANGLE/ COMPUS / BOX MAKING ACCESSORIES	10	SETS
51	SCAFFOLDING MATERIALS	5000	NOS
52	SUBMERSIBLE PUMP (80 MTR STRENGTH)	4	NOS

**WE HAVE ARRANGEMENT FOR MOBILISING SUITABLE ERECTION CRANE OF VARIOUS CAPACITY
AT PROJECT SITES FOR EXECUTION OF OUR ERECTION WORK.**

OUR CHALLENGE

&

WE LOOK FORWARD TO.....

OUR - CHALLENGES

Earlier

- **Overhauling and Maintenance of ESP & ID Fans of Boilers**

Present

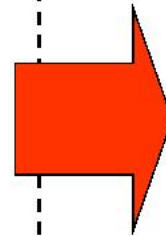
- Erection & Commissioning assistance:**
 - Boiler**
 - ESP**
 - Material Handling**
 - Ash Handling Plants**

Future Objective

- **Execution of EPC Projects in Industry & Power for domestic.**
 - ❖ **Overhauling & Maintenance**
 - ❖ **Supply of Spares for ESP and Bag Filters.**

Challenges

- **Reinforce the engineering group in order to align the future requirement. To the entire satisfaction of the customer**



WE LOOK FORWARD

WE --- RVG

TAKING THE LAST CHALLENGE BATON IN THE RACE OF A PROJECT.....

- OUR ENDEAVOUR TO MAKE IT A GRAND SUCCESS TO YOUR EXPECTATION.....

....."WITH YOUR ON TIME ALL OUR SUPPORT THROUGHOUT THE EXECUTION"

WILL SURELY LEAD US TO MEET OUR COMMON GOAL

WITH THE WIN WIN SITUATION





THANK YOU

**We are here to attend
your needs**



**We are here to serve you better
being associated with you.....**

THANK YOU